

TIDOMAT smartONE

version 2

- smartONE Agent -

Copyright information

© 2008 Tidomat AB. All rights reserved.

No part of this publication may be reproduced, stored in a retrieval system, or transmitted, in any form by any means, electronic, mechanical, recording or otherwise, without the prior written permission of Tidomat AB.

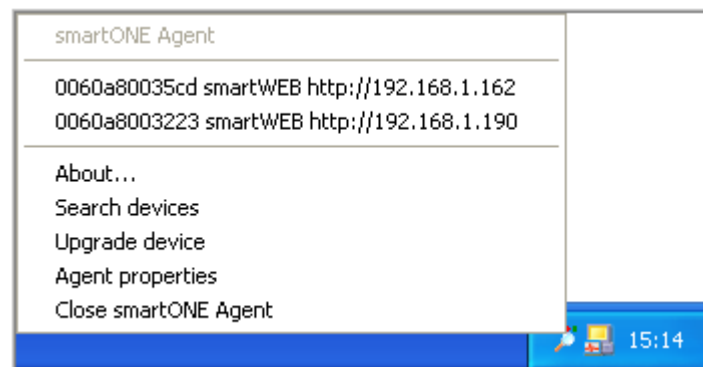
The content of this publication is furnished for informational use only. Data subject to change without notice and should not be construed as a commitment by Tidomat AB.

TIDOMAT, the TIDOMAT logo, smartONE and the smartONE logo are registered trademarks of Tidomat AB. All other trademarks are the property of their respective owners.

www.tidomat.se
info@tidomat.se
doc.no. 01080012-0848
© 2008 Tidomat AB

Introduction

The **smartONE Agent** is an application for Microsoft Windows that makes it easier to keep track of and upgrade your smartONE Central Unit.



smartONE Agent is visible as a tray icon at the bottom right of the screen. Right click the icon to show the menu and all door servers that are found.

About...

Opens the about window that displays what version of the application you have installed.

Search device

Searches the network for new Central Units.

Upgrade device

Upgrades the firmware of a Central Unit.

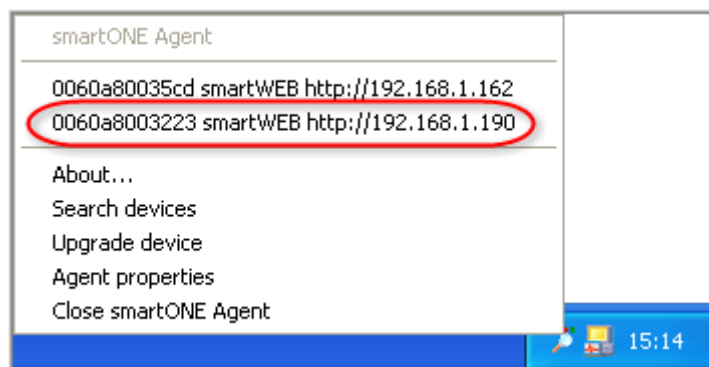
Agent properties

Opens the properties window.

Close smartONE Agent

Closes the application.

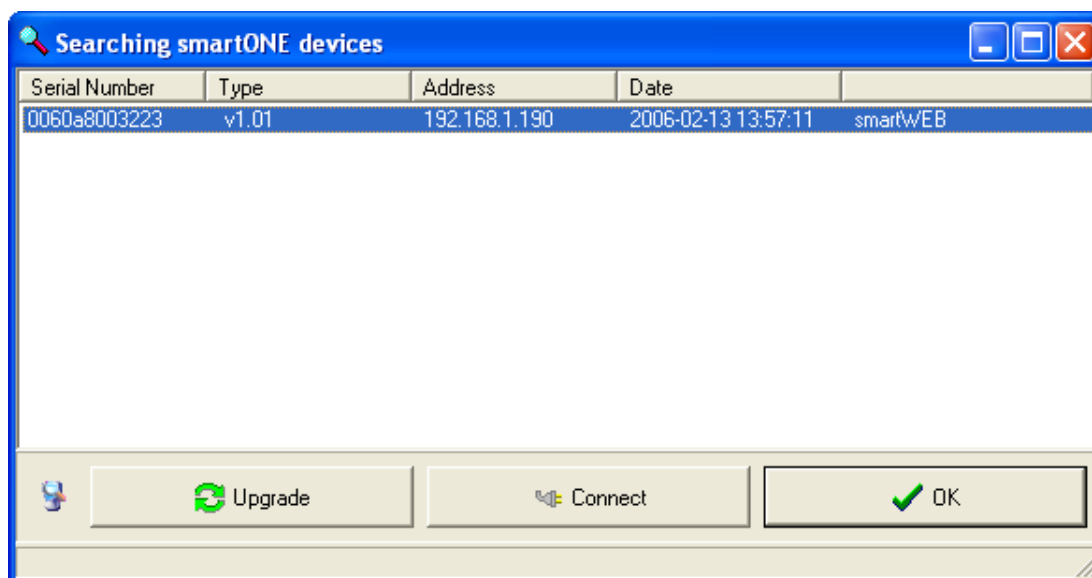
Shortcut to device



All **Central Units** that the smartONE Agent can find on the network will be displayed as shown in the example above. It can take up to five minutes for the Agent to complete a search.

Click on the device you like to connect to. The web browser will start automatically and display the login window for selected **Central Unit**.

Search device



As you open up the Search device window the application will immediately start searching for connected door servers on your network. When the smartONE Agent finds a Central Unit it will be displayed as shown in the example above.

Upgrade

Select a device and click the **Upgrade** button to upgrade the firmware of the selected device.

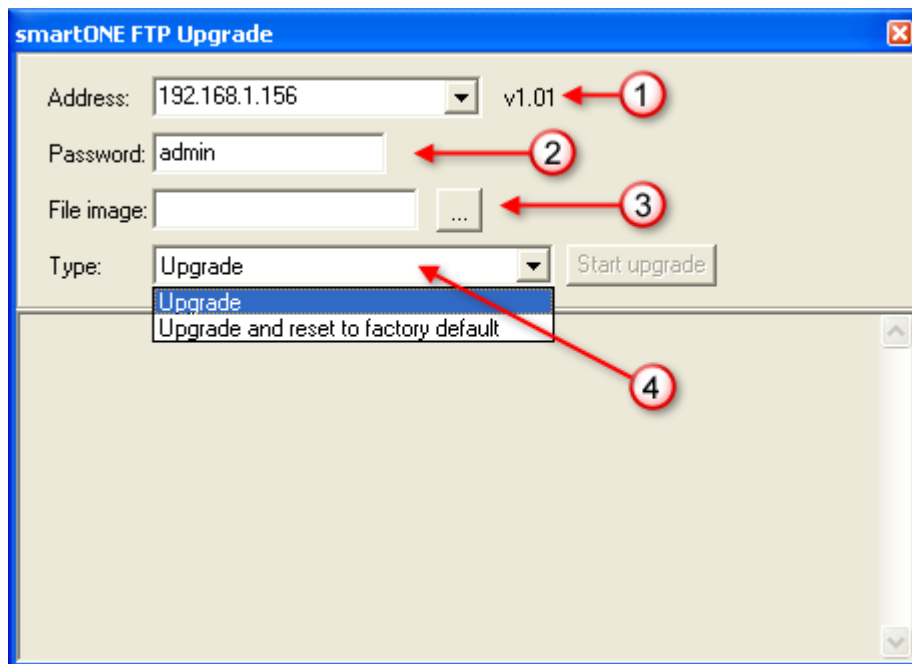
Connect

Select a device and click the **Connect** button to open up the web browser and automatically connect to the Central Unit.

OK

Click the **OK** button to exit the Search device window without closing the smartONE Agent.

Upgrade device



Before you upgrade your Central Unit we recommend that you make a backup of the database and the system settings.

When a upgrade is performed the unit will be restored to factory default except for the network settings (this includes a complete reset of the database).

1. Select Door server to upgrade. The version of the selected unit will be displayed to the right of the drop down list.
2. Enter the password for the user **system**.
3. Browse to select firmware file to use.
4. Select 'upgrade' to make an upgrade. The **Upgrade and reset to factory default** choice will also reset the network settings.

Click **Start upgrade** button to start the upgrade.

When the upgrade has finished the Central Unit will automatically be restarted.

During the process you should not turn off the power to the Central Unit, this may lead to permanent damage!

Firmware upgrade via FTP

Before you upgrade your Central Unit we recommend that you make a backup of the database and the system settings. When a upgrade is performed the unit will be restored to factory default except for the network settings (this includes a complete reset of the database).

Example of flash file: smartONE_US_202.flash

You need a computer that can send FTP commands and access to the system command prompt.

1. Save the flash file to your local hard disk e.g. C:\.
2. Change to the directory where the flash file is located.
3. Run the command: **ftp <smartWEB IP address>**
e.g. ftp 192.168.1.190
4. The Central Unit will ask for Username, enter **system**.
5. The Central Unit will ask for Password, enter the password for the **system** user. (Default password is **admin**).
6. When the login is completed run the command: **put <filename> flash**
e.g. put smartONE_US_202.flash flash
7. The Door server will now upgrade itself. **During the process you should not turn off the power to the Central Unit, this may lead to permanent damage!**
8. When the upgrade is completed, the Central Unit will prompt:
The system upgrade completed successfully. The unit will now reboot.
9. Wait until the Central Unit have restarted before trying to reconnect to it.